



# 2017

## **INSTITUTE ADDRESS**

G.P. “BUD” PETERSON, PRESIDENT,  
GEORGIA INSTITUTE OF TECHNOLOGY



# FRESHMAN ADMISSION - FALL 2017

**31,500**

Freshman applications (a record)  
300% increase in 10 years

**23%**

Overall  
admit rate

**45%**

Admit rate for  
GA students

**55**

countries

**47**

states

**94**

GA counties

**1,260** high schools

**317** in Georgia



**43%**



**57%**



## OMS-CS

- 6,000 students this fall
- Almost 500 graduates

## OMS-Analytics


- 266 enrolled

**23,000** Total applications received

**4,600+** Applications for Online Master of Science Programs

**34%**  
Overall admit rate

**39%**  
International

 **25%**

 **75%**



## Georgia Tech Professional Education

- 2,700+ companies/organizations
- 33K+ unique individuals, 55K total
- MOOCs: 2.5M in 5 years
- Students age 16-85, 102 countries

## CEISMC (annual impact)

- 11,000+ pre-college STEM students
- 1000+ Pre K-12 teachers
- 125+ Georgia Tech Faculty & Staff
- 30+ Colleges, Schools, & Units
- 90+ Graduates & Post Docs
- 250+ Undergraduate Students



# ACCESS AND AFFORDABILITY



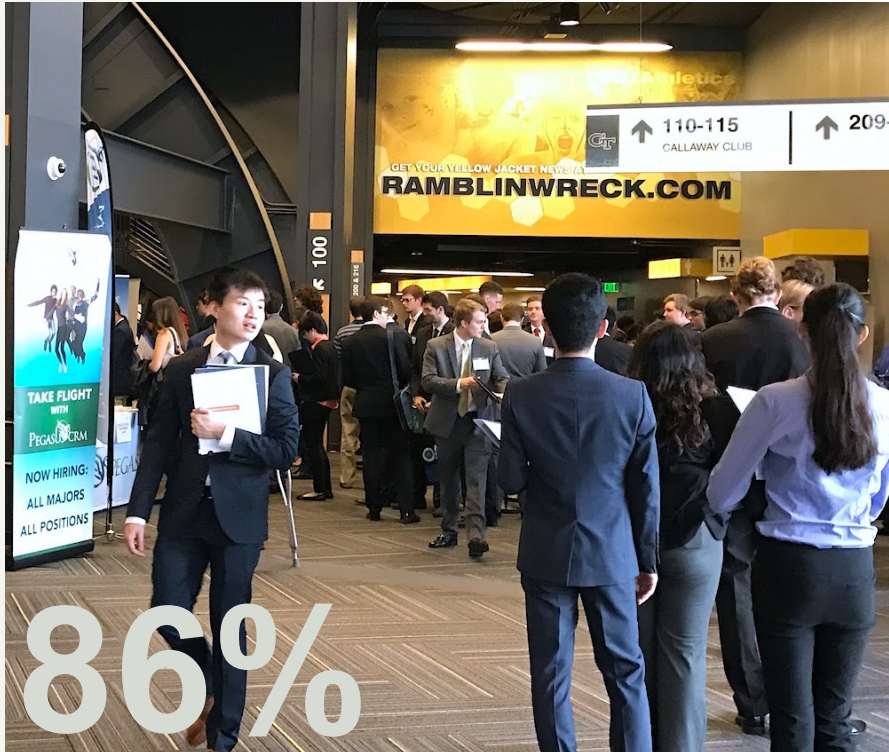
G. Wayne Clough  
Georgia Tech Scholars  
*10 years, 500 graduates*

APS Scholars

Georgia Tech Scholars



# OUR GRADUATES



86%

of the job-seeking students who received their Georgia Tech degree in May 2017 had been offered a job at graduation.

\$70,000

The median starting salary for Georgia Tech BS graduates.

46%

of those with jobs are working in Georgia.

Georgia Tech is ranked **8th** in Annualized Return on Investment in Higher Education by PayScale.com.

# STRATEGIC PLAN GOALS COME TO LIFE

1. Be Among the Most Highly Respected Technology-Focused Learning Institutions in the World
2. Sustain and Enhance Excellence in Scholarship and Research
3. Ensure That Innovation, Entrepreneurship, and Public Service are Fundamental Characteristics of Our Graduates
4. Expand Our Global Footprint and Influence to Ensure That We Are Graduating Good Global Citizens
5. Relentlessly Pursue Institutional Effectiveness



# 1. BE AMONG THE MOST HIGHLY RESPECTED TECHNOLOGY FOCUSED LEARNING INSTITUTIONS IN THE WORLD



**GT 1000**



**Living Learning Communities**



**400+ Student Organizations**



**Study Abroad**



**Co-Op / Internships**



**Undergraduate Research**



**Serve-Learn-Sustain**



**Innovative Instruction**



**Live-Work-Learn-Play**

## 2. SUSTAIN AND ENHANCE EXCELLENCE IN SCHOLARSHIP AND RESEARCH

### Commission on Creating the Next in Education



**50+** faculty, staff, undergraduate and graduate students are exploring innovative approaches to higher education in response to the changing learner needs, workforce demands, technological advances, etc.)

#### Some recurring themes:

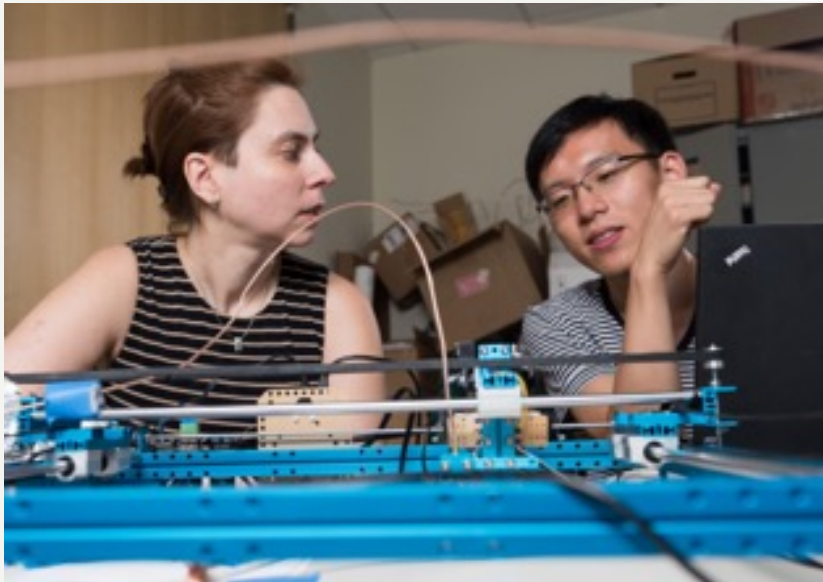
- Educating the “whole person”
- Lifelong partner in learning
- Access, Affordability, & Achievement
- New degrees, certifications
- Advising & Flexible Pathways
- A culture of learning and innovation

# FY 2017 RESEARCH AT A GLANCE

## \$824.8M

total expenditures,  
including 46% from GTRI

New Award Sources: 73% Federal Awards  
14% Industry Awards



## Top 10 Federal Agency Partners in Research

Department of Defense  
National Science Foundation  
Health & Human Services  
NASA

Department of Energy  
Department of Commerce  
Department of Transportation  
Homeland Security  
Department of Labor  
Environmental Protection Agency

# CREATING A HEALTHIER WORLD



CREATING THE NEXT®

### 3. ENSURE THAT INNOVATION, ENTREPRENEURSHIP AND PUBLIC SERVICE ARE FUNDAMENTAL CHARACTERISTICS OF OUR GRADUATES



## CREATE-X

Startup Lab  
Idea to Prototype  
Startup Launch



## InVenture

InVenture@ Georgia  
High Schools  
ACC InVenture



## TI:GER Ideas to Serve



## VentureLab



## 4. EXPAND GLOBAL FOOTPRINT AND INFLUENCE TO ENSURE THAT WE ARE GRADUATING GOOD GLOBAL CITIZENS



- Research and education collaborations with more than 100 countries
- Students from 117 countries
- Campus in Lorraine, France
- New campus in Shenzhen, China



Educational collaboration with the City of Shenzhen and Tianjin University

# 5. RELENTLESSLY PURSUE INSTITUTIONAL EFFECTIVENESS

- Maximize resources through institutional effectiveness
- Put systems and processes in place to improve efficiency and control costs
- Advance the services we provide
- Positioned to take advantage of opportunities

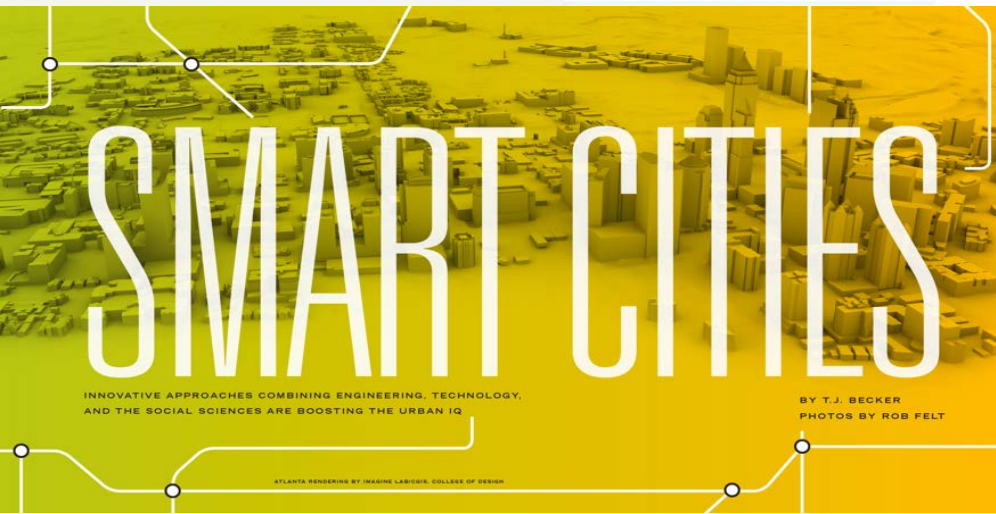


## Roger A. and Helen B. Krone Engineered Biosystems Building

- Made possible through a partnership between the state, Georgia Tech, and Children's Healthcare of Atlanta
- Pediatric Technology Center
- Roger A. and Helen B. Krone naming gift this summer
- Interdisciplinary research — chemical biology, systems biology, cell therapies, and others



# POWER OF PARTNERSHIPS: WITH THE CITY



**MetroLab Network** partnership as founding member with City of Atlanta and Georgia State University

**Special Event** with the City of Atlanta Sept. 14



Nine Smart Cities projects currently underway through Georgia Tech's Center for Urban Innovation

*"Smart-cities may conjure up images of shiny technology and futuristic gadgets, but behind that is an effort to improve citizens' quality of life, providing not only better service but also more equitable access."*

*Debra Lam, Managing Director  
Smart Cities and Inclusive Innovation*

# NEW AND RENOVATED FACILITIES





# CORPORATE INNOVATION CENTERS



**More than 20 innovation centers and labs have opened in and around Tech Square in the past five years.**

Most recent:

1. Keysight Technologies Software Design Center
2. UCB Solution Accelerator
3. Emerson – Helix Innovation Center
4. Chick-fil-A – Innovation Satellite Office (official opening Fall '17)

Governor Deal announced –

- Honeywell will create 800+ jobs and will invest \$19M in Atlanta
- Anthem will bring 1,800 jobs to Georgia

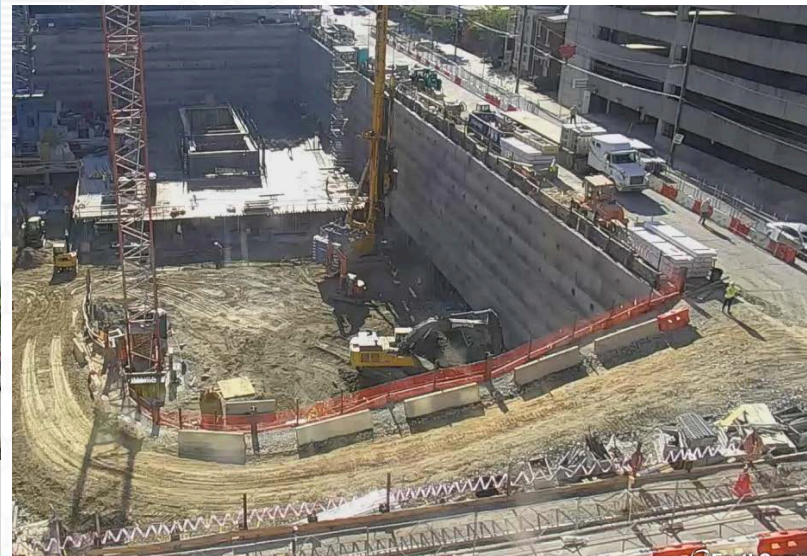
# CONTINUED EXPANSION OF TECH SQUARE



**Coda**



**Biltmore**



**CREATING THE NEXT®**

# ATHLETICS



# 65<sup>TH</sup> ANNIVERSARY OF WOMEN AT GEORGIA TECH



## No. 1 in Women Engineering Graduates

[Home](#)

[About Us](#)

[Student Profiles](#)

[Current Students](#)

[K-12 Outreach](#)

[Sponsors](#)

[Get Involved](#)

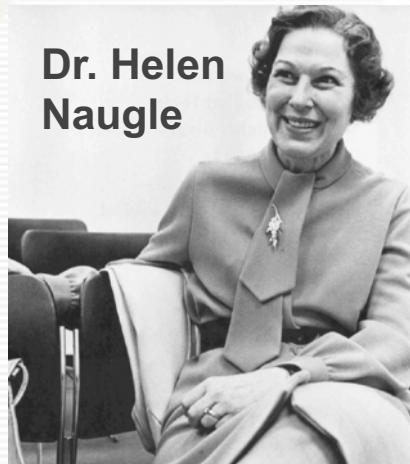
[Search](#)



### Nagela Nukuna named 2017 National Student Body President of the Year



### Dr. Helen Naugle



Naugle CommLab dedicated Aug. '17



Shirley Clements Mewborn, '56



Sandy Magnus, PhD, MSE, '96

CREATING THE NEXT®

## Gender Equity Initiatives

## Black Student Experience Task Force

## Staff Initiatives

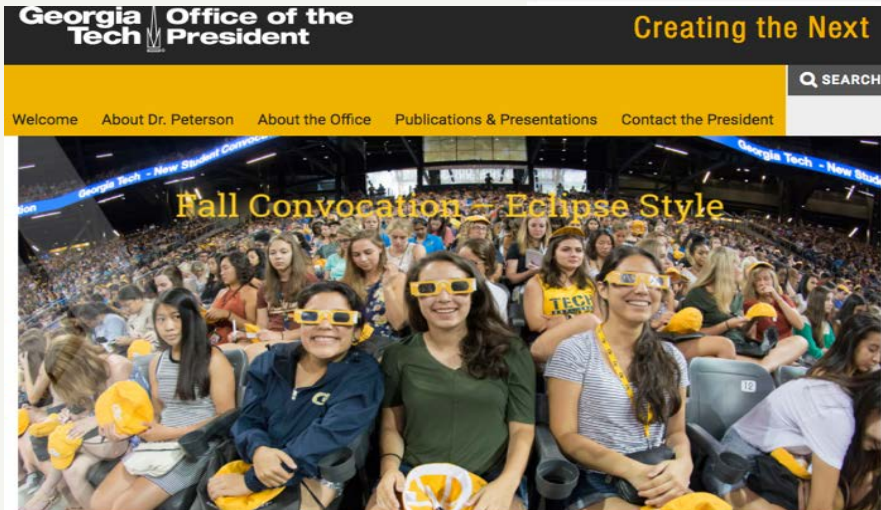


[diversity.gatech.edu/GenderEquityInitiatives](https://diversity.gatech.edu/GenderEquityInitiatives)

[diversity.gatech.edu/BlackStudentExperienceTaskForce](https://diversity.gatech.edu/BlackStudentExperienceTaskForce)

[staffcouncil.gatech.edu](https://staffcouncil.gatech.edu)

# BUILDING AN INCLUSIVE COMMUNITY



## WELCOME BACK - AUG. 21, 2017

Yesterday (Aug. 20), we gathered with nearly 3,000 new students in McCamish Pavilion for our annual New Student Convocation, where I encouraged our freshmen and transfer students to take full advantage of all the resources and opportunities that Georgia Tech has to offer. In addition to the RAT Caps and a copy of the T-Book, this year at Convocation we issued Georgia Tech-branded glasses for viewing today's (Aug. 21) solar eclipse, and we have numerous activities and "watch parties" planned at various locations around campus.

As I thought about the eclipse, I couldn't help but reflect on the similarities between these glasses and some of the recent events in the news, specifically the horrific events that occurred in Charlottesville last weekend. The people who would seek to impose hatred and violence on others in our society are blinded not by glasses, but rather by intolerance, ignorance, and a false sense of superiority that can also do permanent harm. While there will always be those who will try to use the university environment as a platform for their own agendas, we have seen this past week how our academic community and society can stand united in opposition to hatred and bigotry and its distorted view of what freedom means in our United States. At Georgia Tech, we remain steadfast in our commitment to fostering a safe, inclusive, and welcoming environment for the entire community, regardless of race, nationality, ethnicity, gender, beliefs, or perspectives.

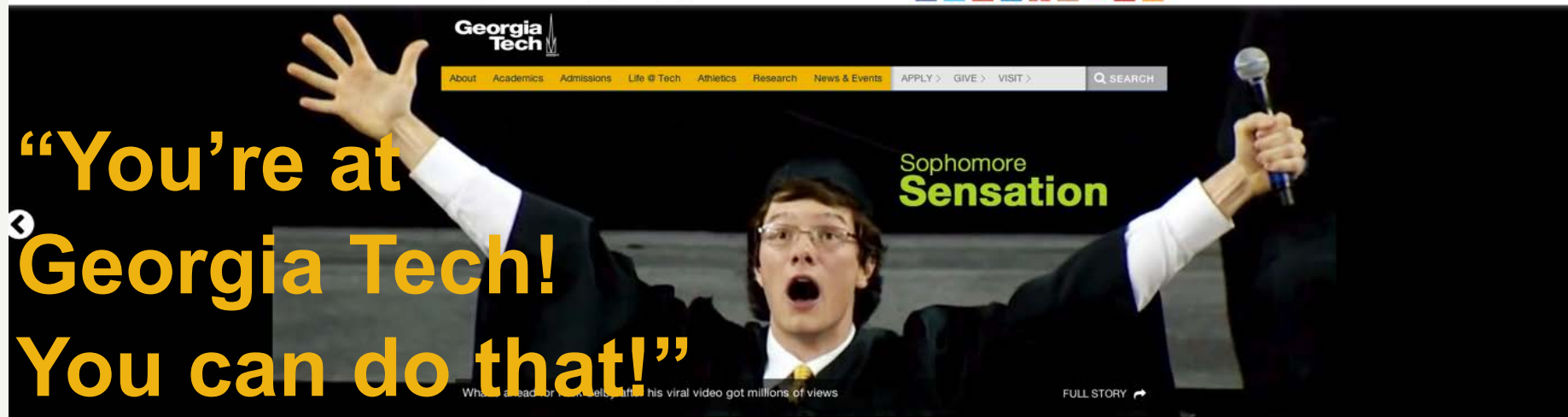
**“At Georgia Tech, we remain steadfast in our commitment to fostering a safe, inclusive, and welcoming environment for the entire community, regardless of race, nationality, ethnicity, gender, beliefs, or perspectives.”**

# 3,500 GRADUATES THIS SPRING WHILE THEY WERE AT GEORGIA TECH . . .



CREATING THE NEXT®

# ON THE 1ST DAY THEY WERE TOLD...



**5 million**  
views across  
multiple platforms

**TRENDING @ TECH**

In fourteen hundred ninety-two, Columbus sailed the ocean blue. In eighteen hundred eighty-five, Georgia Tech's campus came alive.

**Prospective Students** | Parents | Alumni | Government & Community | Industry

**Prospective Students**

Prestigious academics. Cutting-edge technological research experience. Awesome campus life. A fantastic career foundation. That's what Georgia Tech — one of the nation's top 10 public universities — offers its undergraduate, graduate, and professional students.

**Quick Links**

- Visit Georgia Tech
- How To Apply
- Financial Aid
- Student Life in Atlanta

**Return on Investment**

Bloomberg/Businessweek ranked Georgia Tech number two in the nation, and first in the state of Georgia, in annualized return on investment (ROI) based on the financial return graduates earn from their degree. According to the survey Georgia Tech graduates receive, on average, a 14.9 percent return on their tuition investment.

**Upcoming Events**

**THURSDAY OCT 17**

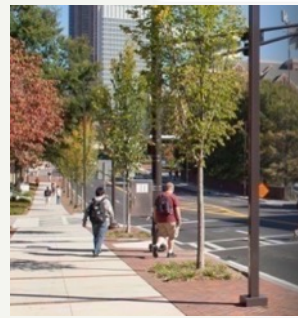
**Celebrate Hispanic Heritage Month with the School of Modern Languages**  
9:30am  
Swann Building, 613 Cherry Street, Atlanta, GA 30332

**Georgia Tech Farmers Market**  
11:00am  
Tech Walk

**SCPC Options presents: Pumpkin Decorating**  
2:00pm

Featured by  
news outlets all  
over the world  
August 19, 2013

# THEY OPENED SEVERAL NEW FACILITIES



- 4 new dining facilities
- The EBB
- The John and Mary Brock Football Facility
- The McCamish Pavilion

- The Noonan Golf Facility
- The Zelnak Basketball Practice Facility
- The Caddell Building and other renovations
- The Einstein Monument

# THEY SAW A 53-YD FIELD GOAL IN ATHENS, AND THE “MIRACLE ON TECHWOOD”



Nov. 29, 2014 – Harrison Butker kicks a 53-yard FG to send the game into overtime, setting up Georgia Tech’s 30-24 win.



Oct. 24, 2015 – Tech defeats #9 Florida State 22-19 after Lance Austin returns ball 78 yards to win after a blocked field goal attempt.

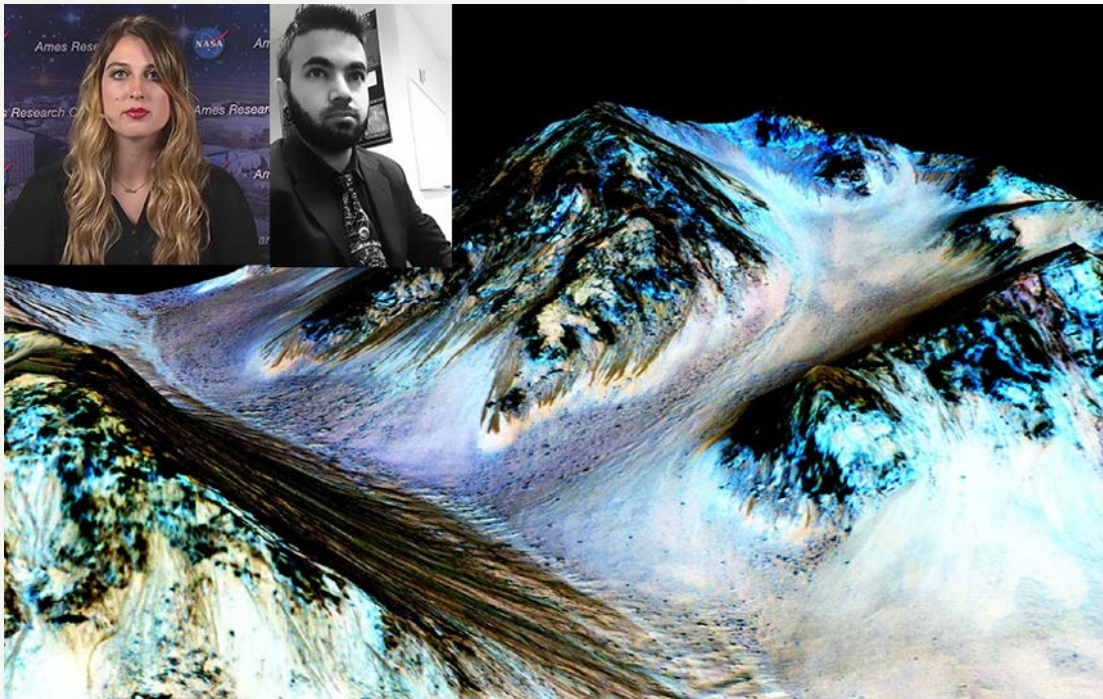
# THEY FILLED MCCAMISH TO HEAR PRESIDENT OBAMA SPEAK ON CAMPUS



# THEY WATCHED WHILE GEORGIA TECH RESEARCHERS HELPED DISCOVER WATER ON MARS



Reported globally by  
3,000 media outlets



AND THEY SAW OUR FACULTY AND STUDENTS  
HELP VERIFY EINSTEIN'S THEORY OF RELATIVITY



NSF announced that LIGO – the Laser Interferometer Gravitational-Wave Observatory – had observed a one of the most significant physics discoveries this century.

Georgia Tech faculty, students, and staff were involved.



BUT WHAT IS MORE IMPRESSIVE IS WHAT  
THEY WILL ACCOMPLISH IN THEIR LIFETIMES



And you have helped to make it all possible!!!



CREATING THE NEXT®